

Capacity Architecture

Service Architecture – Capacity

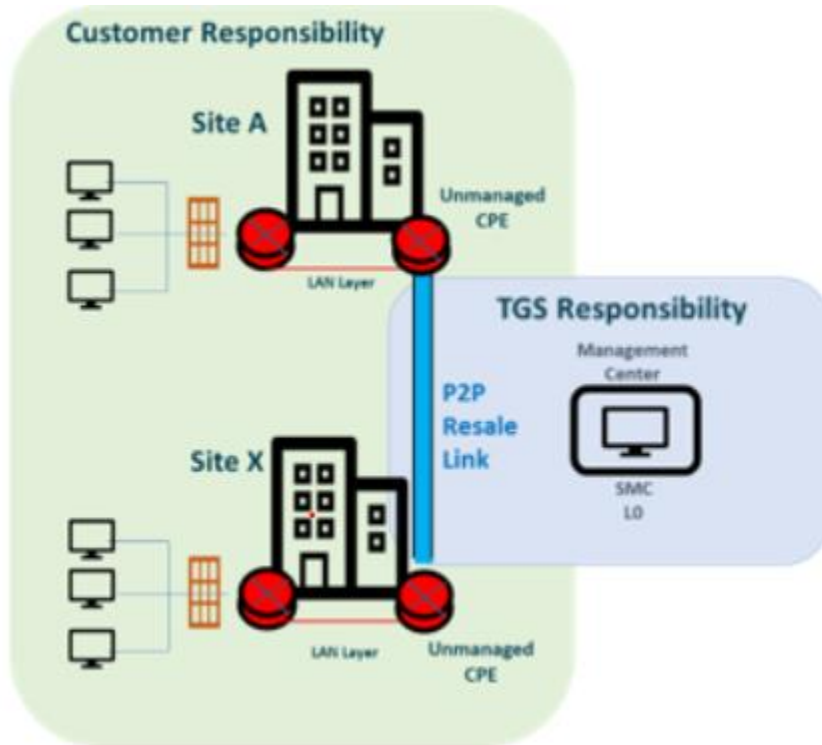


Fig 1.- Capacity-Incident Management

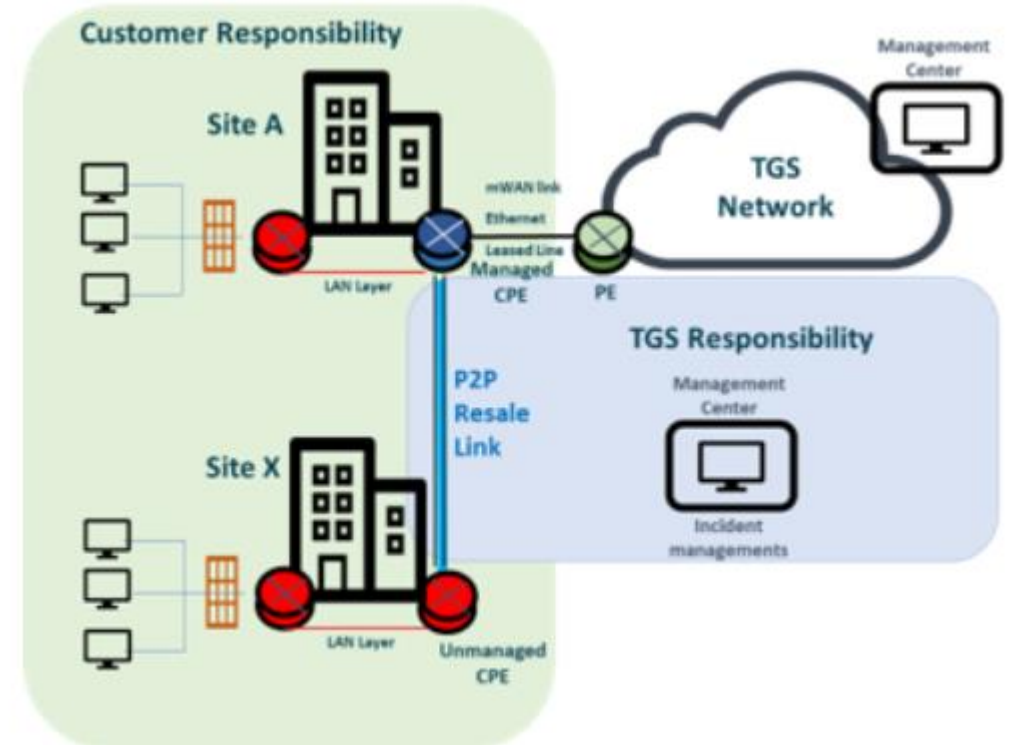


Fig 2.- Capacity-P2P Service

OUR SOLUTIONS

Service Architecture – Capacity

Maximum 3 interconnection scenarios:

P2P WITH A SINGLE PROVIDER

A single provider is able to provide the service required by the customer

P2P With a single provider

A single provider is able to provide the service required by the customer

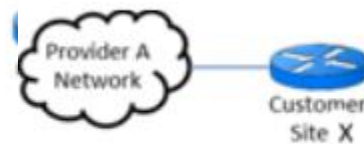


P2P WITH 2 PROVIDERS

A provider does not reach the other end of the customer location in the last mile. They are interconnected via cross connection in a DC

P2P With 2 Providers

A provider is able to provide the service required by the customer

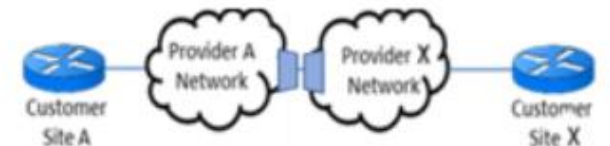


P2P WITH 3 PROVIDERS

Main provider (Ex. Telxius) does not reach the customer location at both ends. They are interconnected via cross connection in DCs

P2P With 3 Providers

A provider does not reach the other end of the customer location in the last mile. They are interconnected via cross connection in a DC



Service Architecture – Capacity

Cross connection

- **2 providers** – One of them provides the XC



- **3 providers** – Central provider provides the XC

