

# Capacity Architecture

# Service Architecture – Capacity

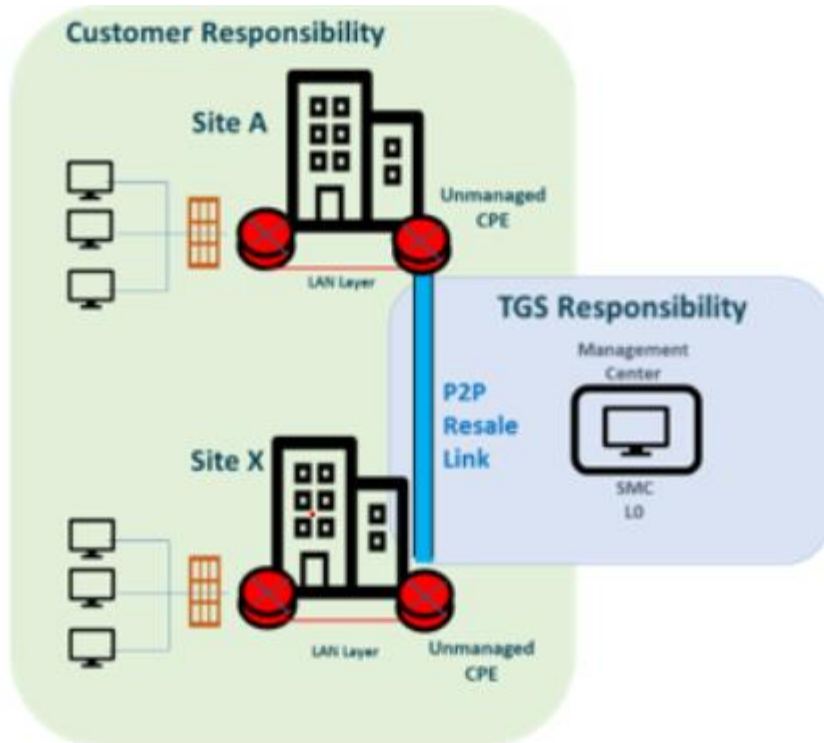


Fig 1.- Capacity - Incident Management

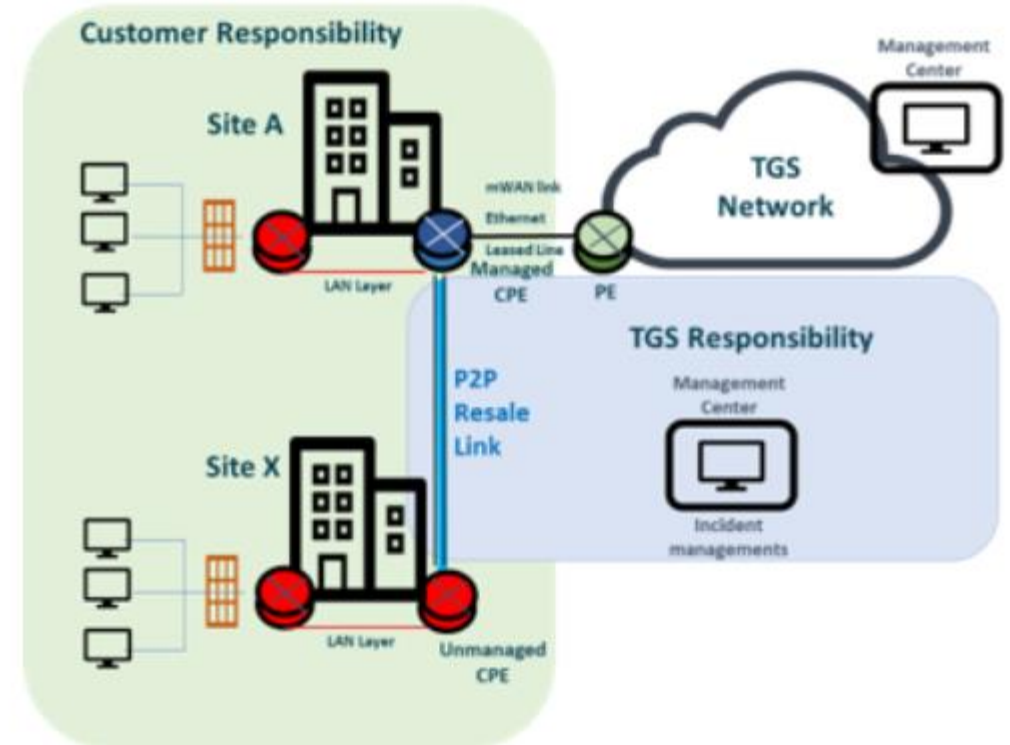


Fig 2.- Capacity – P2P Service

© 2021 Telefonica Global Solutions. All rights reserved. Any use of the materials, including reproduction, modification, distribution or republication, without the prior written consent of Telefonica Global Solutions, is strictly prohibited. These materials are CONFIDENTIAL and shall not be disclosed to any one beyond the intended recipient.

## Service Architecture – Capacity

Maximum 3 interconnection scenarios:

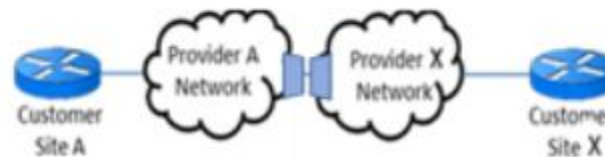
### P2P WITH A SINGLE PROVIDER

A single provider is able to provide the service required by the customer



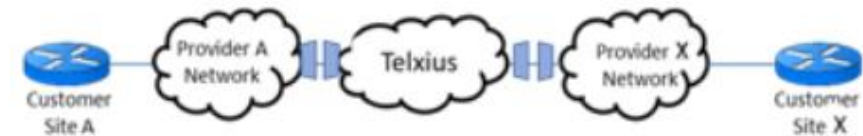
### P2P WITH 2 PROVIDERS

A provider does not reach the other end of the customer location in the last mile. They are interconnected via cross connection in a DC



### P2P WITH 3 PROVIDERS

Main provider (Ex. Telxius) does not reach the customer location at both ends. They are interconnected via cross connection in DCs



## Service Architecture – Capacity

Cross connection

- **2 providers** – One of them provides the XC



- **3 providers** – Central provider provides the XC

